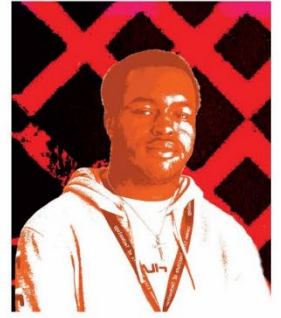




NEWHAM
COLLEGE
LONDON



NEWHAM
COLLEGE
LONDON



ENROLMENT INFORMATION

16-18-YEAR-OLDS/SCHOOL-LEAVERS

Enrolment opens:
Thursday 22nd August 2024
10am – 7pm

If you're aged 16-18, you will need to bring:

- **Proof of residency** (British passport or British Birth Certificate, biometric card, EU settlement documentation if you are European). If your visa states that your residency is linked to your Parent or other Family Member, then you will need to bring their documents also.
- **Exam results/qualifications.** Evidence must be from the Exam Board (we do not accept letters from your School).
- **Section 20 letter.** If you are Looked After by the Local Authority, which is issued by the Local Authority, please ask your Social Worker.

Take 10 minutes now

If you haven't already done it, submit your application for your course before enrolment and save yourself time on the day!

Places will be offered

On a first-come, first-served basis and subject to meeting all entry requirements for your particular course and availability.